



High Trees Community Development Trust
St Martins Learning Centre
220 Upper Tulse Hill
London SW2 2NS

Tel: 020 8671 3132
Fax: 020 8674 0166

COMPANY NO.3573630
CHARITY NO.1079581

BURNELL HOUSE CYBERCYCLE CENTER

This hub space is offered as part of High Trees Development Trust's initiative to offer affordable supported office space to local community groups, social enterprises and other initiatives that are of benefit to the local community.

Location

Near Tulse Hill train station, within 1 mile walking distance of Brixton Town Centre, with local bus routes into Brixton, Norwood, Streatham, and Crystal Palace.

Office Rental

The space is offered fully equipped with computers, internet access, telephone systems, cabinets, photocopier, a kitchen space and on site support. The space is alarmed and is offered as all inclusive of running costs. The hub will be open normal working hours 10am – 5pm, five days a week. Additional hours and times are available but will have to be negotiated separately and in addition to the rent outlined below.

Area 1 - 36 square meters

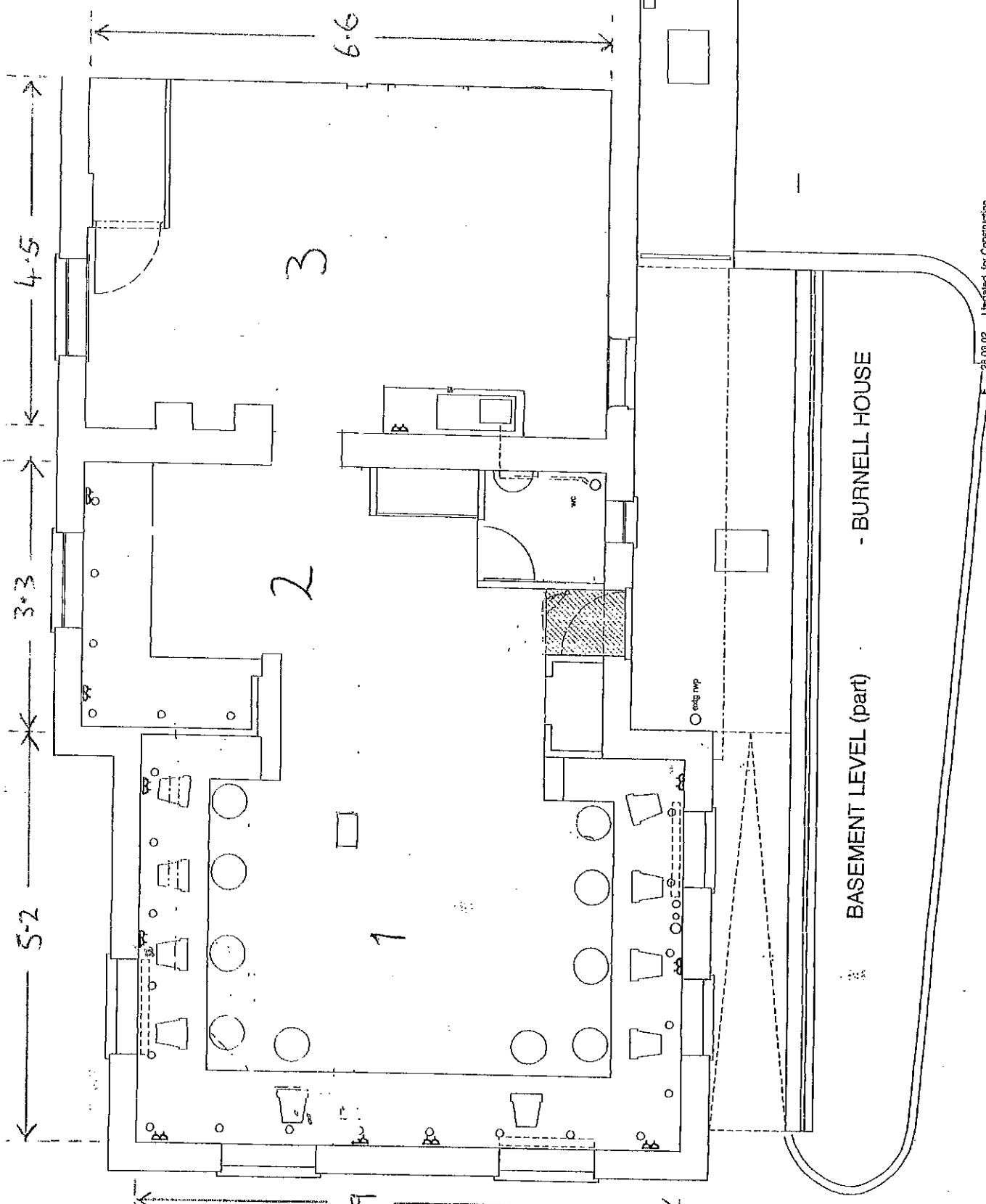
£1600 per month

Available in 2 spaces of 18 square meters £800 each a month
OR in 4 spaces of 9 square meters £400 each a month

Area 2 - 16 square meters

£600 per month

Please see floor plan overleaf.



INTERNAL MEASUREMENTS
 FLOOR AREA (APPROX.)
 AREA 1: 36 sqm (360 sqft)
 AREA 2: 16m² (160 sqft)
 (EXCLUDES W/C ETC.)
 AREA 3: 30m² (300 sqft)

BURNELL HOUSE
 BASEMENT LEVEL (part)

E	25.03.02	Updated for Construction
D	07.02.02	Updated for Construction
C	10.11.01	Updated for Tender
B	10.01.01	Updated for Costing
A	09.10.00	Updated for Costing

Do not scale from this drawing. All dimensions to be checked on site. This drawing remains the copyright of the architect